

**ADVANCED MOTORISED LASER
POWER ATTENUATOR - LPA-A**

PRODUCT ID:

S/N:

LPA-A**LPA1901014****PRODUCT SPECIFICATIONS**Attenuation range: <0.1 % to >98 %
Coating: 515-532 nmInput CA: Ø15 mm
Output CA: Ø15 mm**Wavefront distortion measurement***

*measured with ZYGO Verifire XPZ interferometer at 633 nm

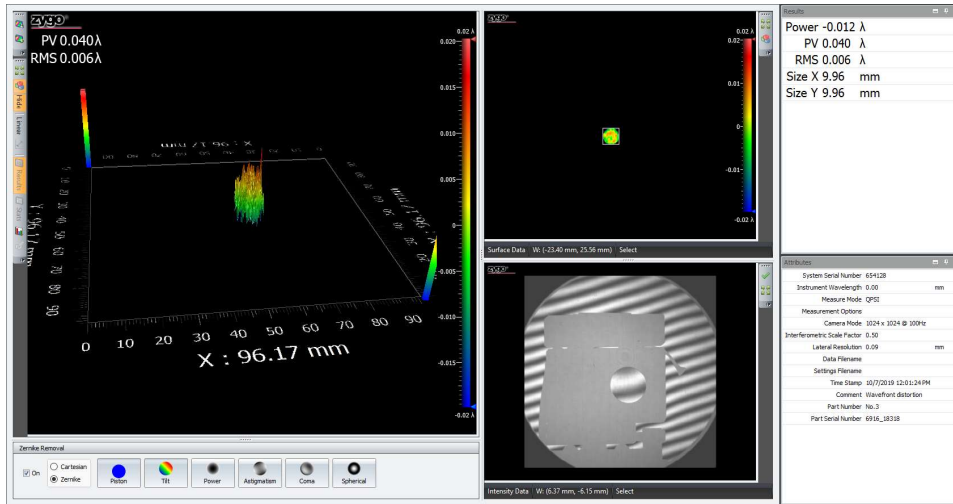
RESULTS:

Beam size	Result	Standard
Ø 10 mm	$\lambda/25$ - p-pol $\lambda/25$ - s-pol	< $\lambda/15$
Ø 11 mm	$\lambda/20$ - p-pol $\lambda/20$ - s-pol	< $\lambda/12$
Ø 12 mm	$\lambda/16$ - p-pol $\lambda/16$ - s-pol	< $\lambda/10$
Ø 13 mm	$\lambda/15$ - p-pol $\lambda/15$ - s-pol	< $\lambda/10$
Ø 14 mm	$\lambda/13$ - p-pol $\lambda/13$ - s-pol	< $\lambda/8$



Configuration: 10 mm input

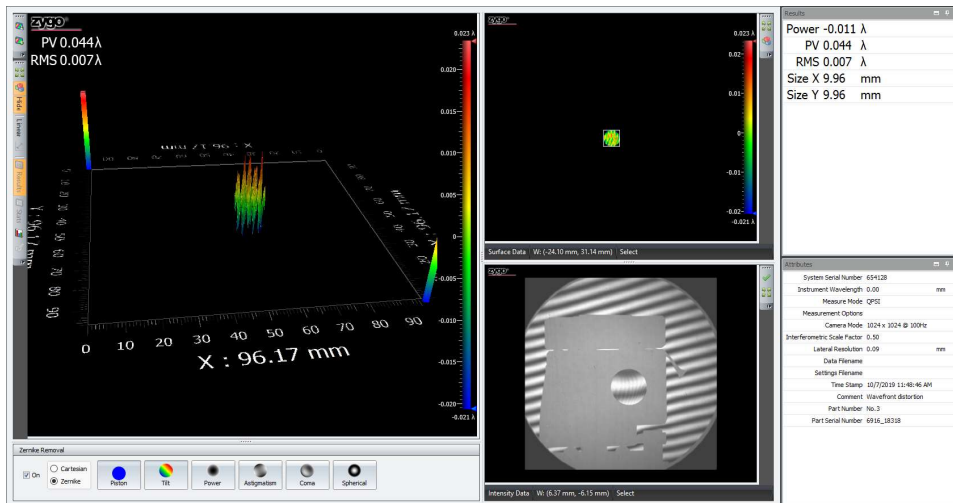
$\lambda/25$ - p-pol
 $\lambda/25$ - s-pol



Monday, October 7, 2019

margarita

1/1



Monday, October 7, 2019

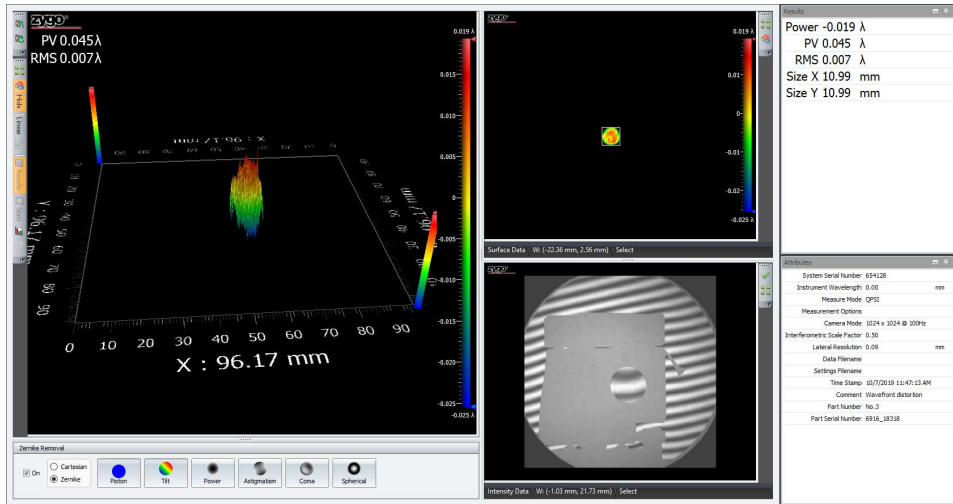
margarita

1/1



Configuration: 11 mm input

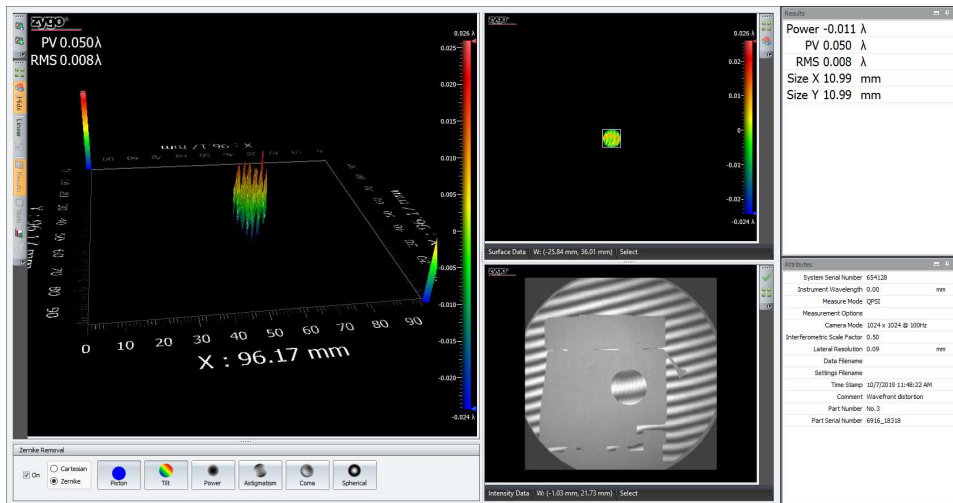
$\lambda/20$ - p-pol
 $\lambda/20$ - s-pol



Monday, October 7, 2019

margarita

1/1



Monday, October 7, 2019

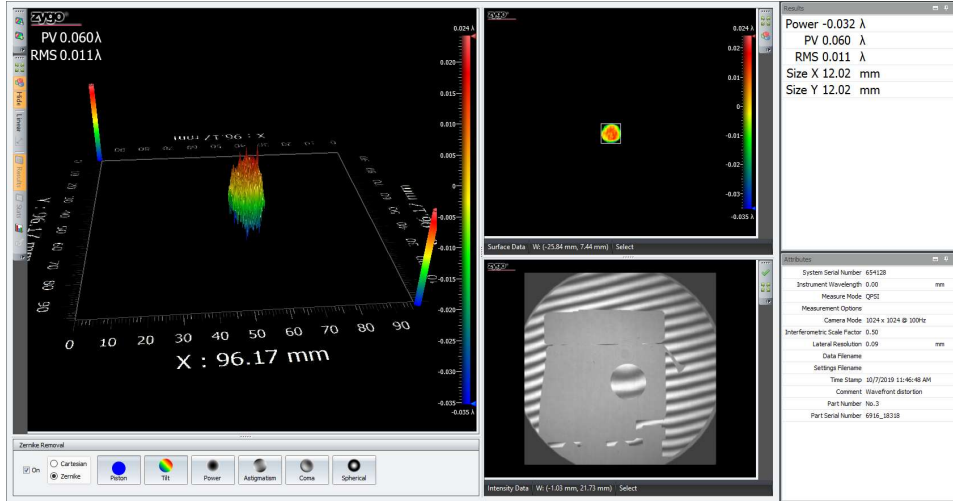
margarita

1/1



Configuration: 12 mm input

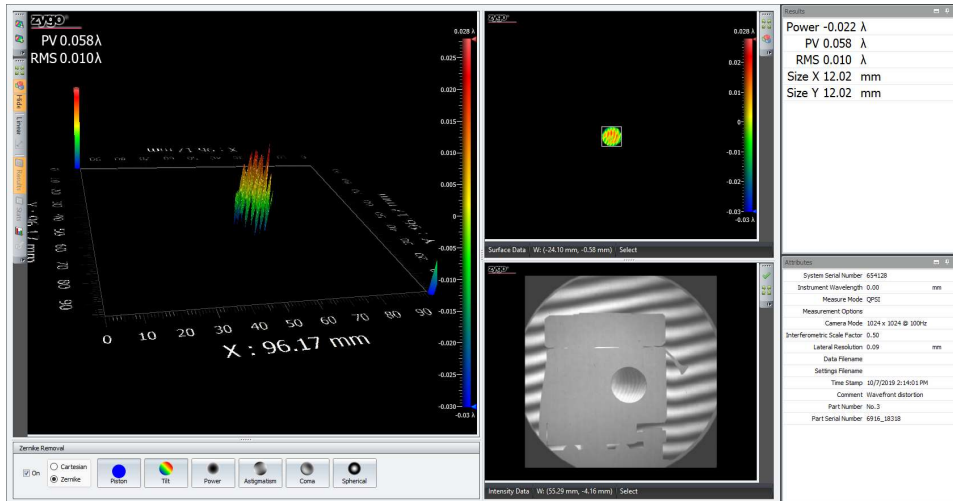
$\lambda/16$ - p-pol
 $\lambda/16$ - s-pol



Monday, October 7, 2019

margarita

1/1



Monday, October 7, 2019

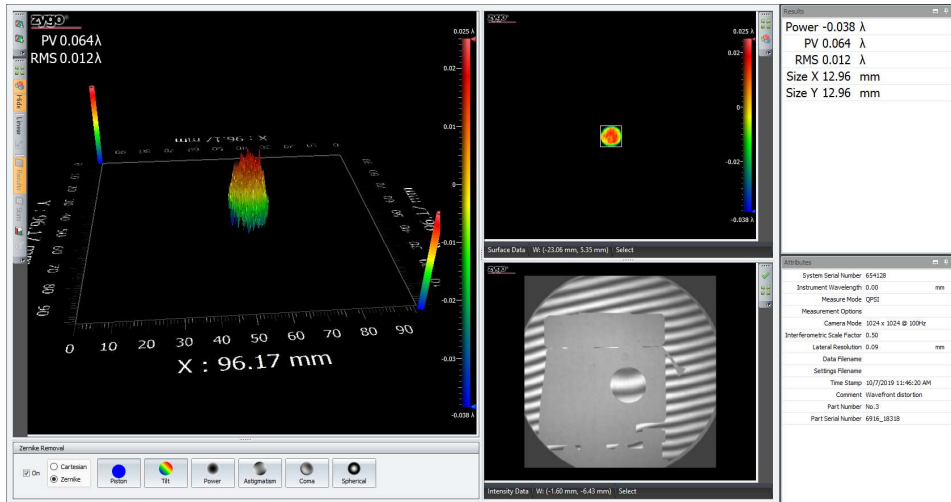
margarita

1/1



Configuration: 13 mm input

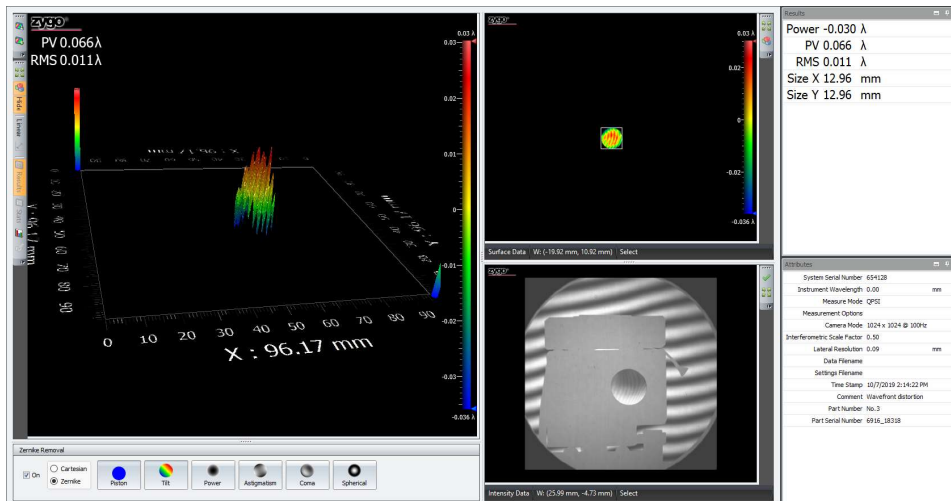
$\lambda/15$ - p-pol
 $\lambda/15$ - s-pol



Monday, October 7, 2019

margarita

1/1



Monday, October 7, 2019

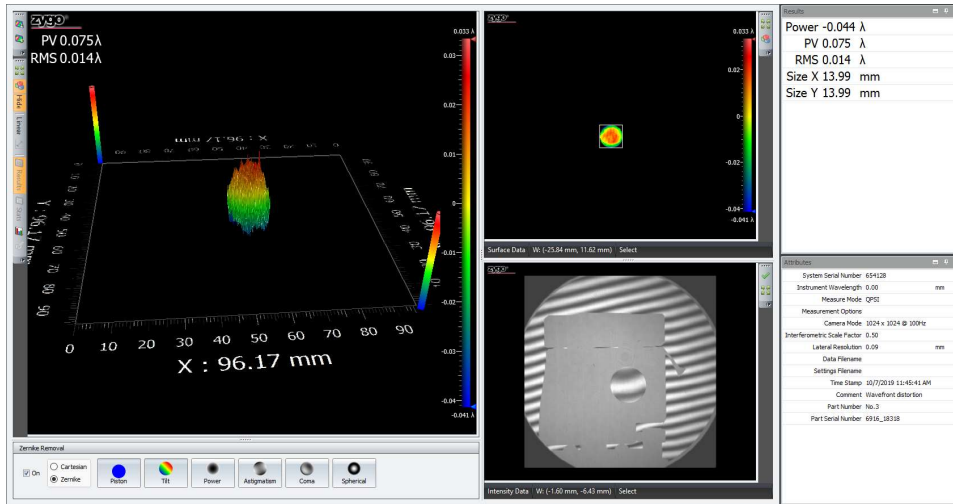
margarita

1/1



Configuration: 14 mm input

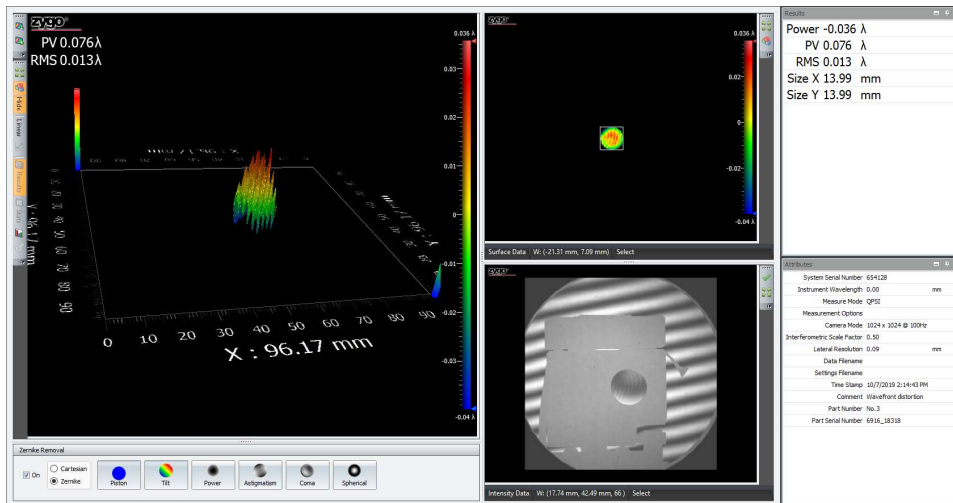
$\lambda/13$ - p-pol
 $\lambda/13$ - s-pol



Monday, October 7, 2019

margarita

1/1



Monday, October 7, 2019

margarita

1/1